

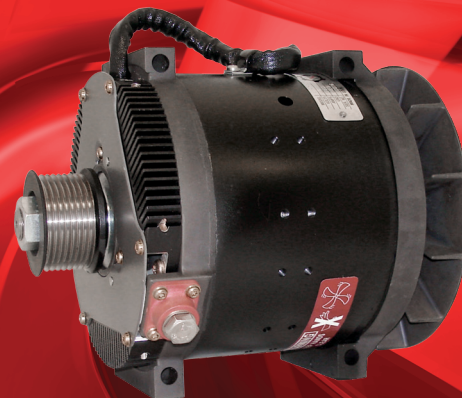
# C527 Alternator

## 14 Volt 360 Amp

### Key Features

#### High Output at Idle, 170A at 200°F

**Digital Smart Regulator** option allows for battery charge rate optimization in all climates and operating conditions when used with corresponding voltage and temperature sense harness. Smart regulator also features J1939 compatible communications and operation with CEN's J1939 interfacing software.



### Alternator Characteristics

Unique brushless construction eliminates rotating windings, brushes, and slip rings. This increases durability, extends service life, eliminates arcing and reduces electromagnetic interference (EMI).

Optional battery voltage / temperature sense regulator allows for battery charge rate optimization in all climates and operating conditions. J1939 compatible.

Optional dual alternator configuration is controlled by dual regulators. J1939 compatible.

Direct interchange, pad mount design is compatible with 190mm bracket.

Overvoltage Cut-Out Circuit (OVCO) is a safety feature that detects high voltage in excess of normal voltage transients and prevents sustained overvoltage conditions.

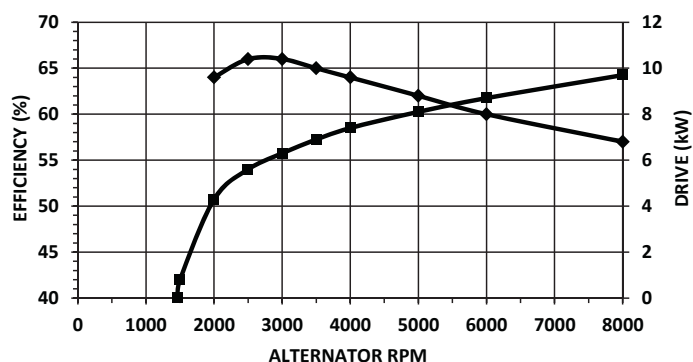
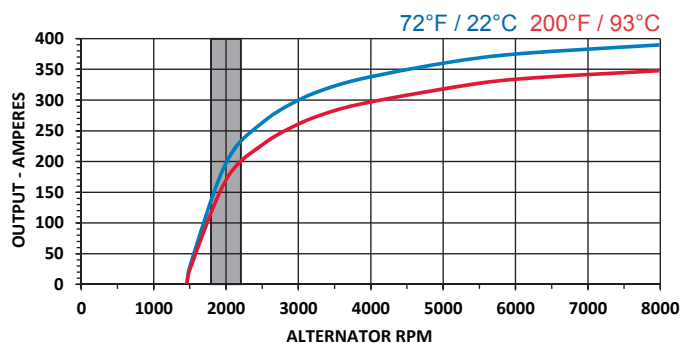
Modular rectifier assembly is equipped for easy servicing and reduces repair costs.

Long life bearings have high temperature grease and are heat stabilized for extended service life in hot engine compartments.

High efficiency means lower internal operating temperature, resulting in longer life. Less engine power needed to produce electric power means more engine power available for other needs.

Designed and manufactured in the U.S.A.

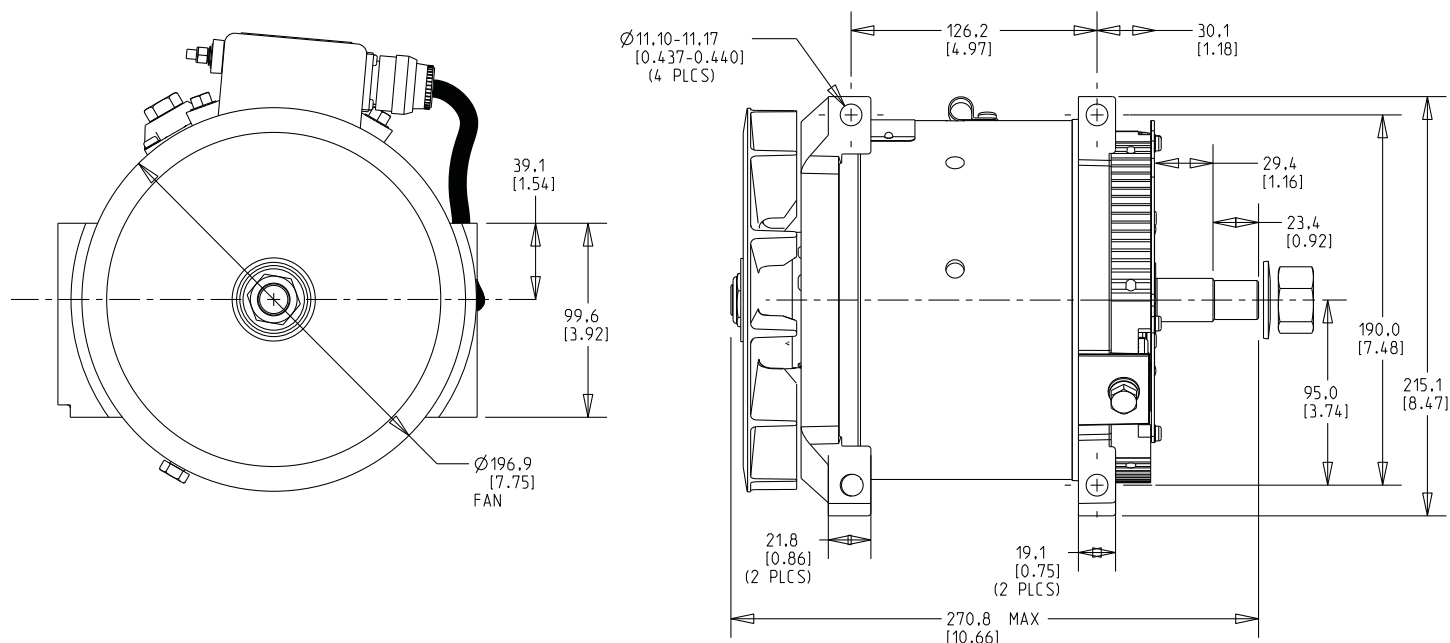
### Output and Efficiency



The measurements listed on the curves are taken at the listed ambient temperatures with a stabilized machine temperature, as per SAE J56. The shaded area highlights output available at typical engine idle alternator speed.

## Dimensions

Linear Measure mm [in]



## Unit Specifications

Upgrades C524 and C520

190mm Pad mount bracket




External regulator

Rated for 8000 RPM continuous operation and momentary over speed to 10000 RPM

45 lbs. / 20.6 kg Unit weight

90 - 100 lbs. Belt tension

## Charging System Status LED Indicator

-  Green LED indicates regulator is energized and alternator is producing regulated voltage at set point.
-  Amber LED indicates regulator is energized and voltage is below set point or alternator is overloaded.
-  Red LED indicates Voltage is above set point.

## Accessories

A2-334 - Diagnostic regulator

A2-343 - Smart temp/volt sense regulator (Dual Alternator)

A2-348 - Temp/volt sense regulator

A2-335 - Remote mount diagnostic regulator

A2-350 - Remote mount temp/volt sense regulator

A9-4039 - Temp sense harness

A9-4032 - 6" Extension harness

A9-4033 - 12" Extension harness

A9-4040 - 32" Extension harness

8, 10, or 12 Groove pulley

